

HIT Series

SPECIFICATIONS

HOUSING: Channel die formed of code gauge steel, reinforced by ribbing the entire length for extra rigidity. Dual purpose end plates act as coupler for continuous row mounting. Socket plates snap into place without screws.

OPTIONAL REFLECTOR: Solid top 48" long, die formed, cross-ribbed and double embossed for added rigidity. 15% uplite slotting is optional. Fastens without tools to channel by two captive turn latches. Silver enhancement reflector also available, consult factory for specifications.

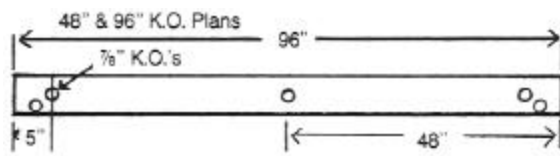
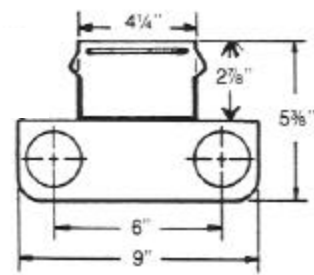
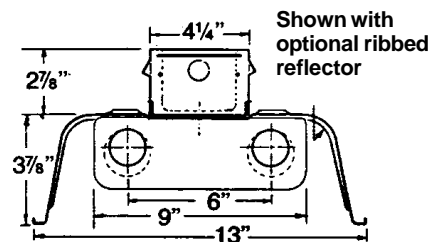
FINISH: All metal parts are cleansed by a multi-stage process and treated with an iron phosphate coating to improve paint adhesion and rust resistance, then electrostatically sprayed with white enamel and baked at 375°F. Minimum of 90% reflectivity.

ELECTRICAL: All units wired with ballasts incorporating Class P thermal protection, for 120 volt, 60 cycle AC current. Other voltages available. Ballasts mounted in direct contact with housing for maximum heat dissipation. Sockets completely wired.

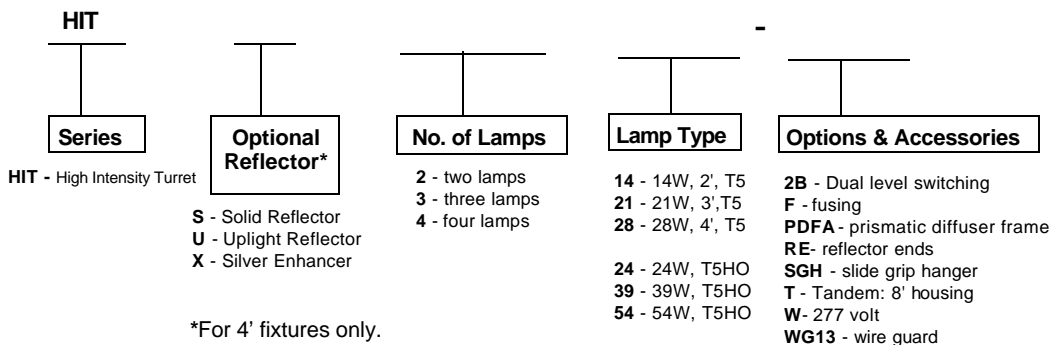
INSTALLATION: Units may be surface or pendant mounted, individually or in continuous rows.

LABELS: U/L combined with I.B.E.W. label.

Specifications subject to change without notice.



ORDERING INFORMATION: Example HITS 214



Duray Fluorescent Manufacturing Company, Inc.

2050 West Balmoral Avenue Chicago, Illinois 60625 Phone 773.271.2800 Fax 773.271.4410 www.durayinc.com