

Mini Side Mount Series

T5

MODEL NO.	No. of Lamps	Ballast Type	Nom. Length
CRNTSX114-T5	1-14W	SSB/T5	22½"
CRNTSX121-T5	1-21W	SSB/T5	34½"
CRNTSX128-T5	1-28W	SSB/T5	46½"

Note: "X" in catalog number denotes side mount.

Options & Accessories

Code	Description	Code	Description
M	turn knob switch	W	277 volt
Q	6' cord/plug white	R	pull chain

Specifications

Housing Code gauge steel sheet metal die formed construction.

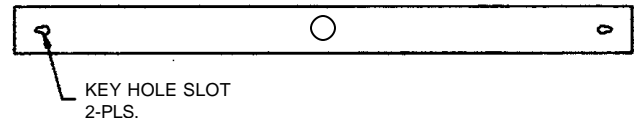
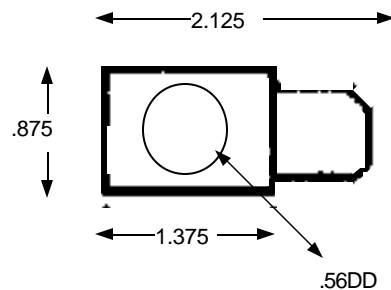
Electrical Electronic ballast incorporating Class "P" thermal protection. 120 volts AC 60 Hz standard. Class "A" sound rating. Ballasts mounted in direct contact with housing for maximum heat dissipation. Sockets completely wired and mounted.

Installation Key hole slots provided for surface mounting, individually or in continuous rows.

Finish Detergent cleaned with iron phosphate and chromic acid rust inhibitor, chip resistant powder urethane polyester coating, electrostatic applied and baked at 375 degrees F.

Labels U/L listed and I.B.E.W.

Other Accessories rated for 120 volt use.



PROPRIETARY NOTE

Except for uses expressly granted in writing information disclosed hereon is confidential and all rights, patent or otherwise, are reserved by Duray Fluorescent Mfg. Co. Specifications subject to change without notice

10/03



Duray Fluorescent Manufacturing Company, Inc.

2050 West Balmoral Avenue Chicago, Illinois 60625 Phone 773.271.2800 Fax 773.271.4410 www.durayinc.com