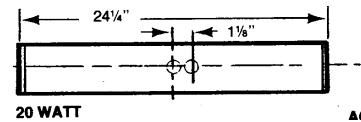
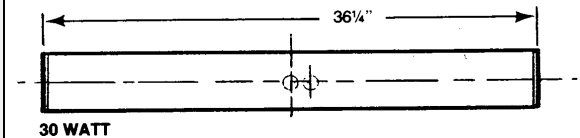
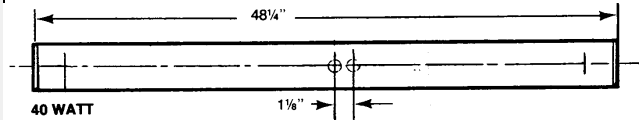


Square-Deelite Series

Model Number White Enamel	Model Number Walnut-Grained Vinyl	Number of Lamps	Ballast Type	Nominal Length
WTH6115	TH6115	1-15W	TS, HPF	18¼"
WTH6120	TH6120	1-20W	TS, HPF	24¼"
WQH6130	QH6130	1-30W	RS, HPF	36¼"
WQH6140	QH6140	1-40W	RS, HPF	48¼"
WTH6215	TH6215	2-15W	TS, HPF	18¼"
WTH6220	TH6220	2-20W	TS, HPF	24¼"
WQ6230	Q6230	2-30W	RS, HPF	36¼"
WQ6240	Q6240	2-40W	RS, HPF	48¼"



Model Number White Enamel	Model Number Walnut-Grained Vinyl	Number of Lamps	Ballast Type	Nominal Length
WTH6117	TH6117	1-17W	SSB/T8	24¼"
WQH6125	QH6125	1-25W	SSB/T8	36¼"
WQH6132	QH6132	1-32W	SSB/T8	48¼"
WTH6217	TH6217	2-17W	SSB/T8	24¼"
WQ6225	Q6225	2-25W	SSB/T8	36¼"
WQ6232	Q6232	2-32W	SSB/T8	48¼"



For flat white acrylic diffuser, suffix catalog number with "MW."

OPTIONS & ACCESSORIES

Code	Description	Code	Description
G	night light	MW (suffix)	smooth white plastic
K	grounded convenience outlet	WD	walnut grain vinyl on metal-front baffle
M	turn knob	WWD	white front baffle
R	pull chain	6200	coupler for continuous rows
EBP	Emergency battery pack		

SPECIFICATIONS:

HOUSING: Entire construction rigidly die-formed of code gauge steel.

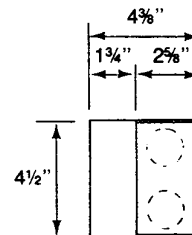
SHIELDING: Choice of acrylic prismatic or acrylic white diffuser for soft & even glare-free illumination. Easily installed and removed.

FINISH: All metal parts are cleaned by a multi-stage process and treated with an iron phosphate coating to improve paint adhesion and rust resistance, then electrostatically sprayed with white enamel and baked at 320°F. Minimum of 88% reflectivity.

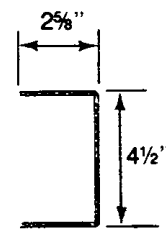
ELECTRICAL: All units wired with ballasts incorporating Class P thermal protection, for 120 volt, 60 cycle AC current. Ballasts mounted in direct contact with housing for maximum heat dissipation. Sockets completely wired and mounted.

INSTALLATION: Units may be surface mounted, individually or in continuous rows. For continuous row installation, specify number of fixtures per row.

LABELS: U/L and I.B.E.W.



Square-Deelite end view



Acrylic prismatic diffuser

Please note: Specifications subject to change without notice.

