

Staggered Strip - Two Lamp

MODEL NUMBER	No. OF LAMPS	BALLAST TYPE	NOMINAL LENGTH
SS1220	2-20W	TS,LPF	27"
SSH1220	2-20W	TS,HPF	27"
SS1230	2-30W	RS,HPF	39"
SS1240	2-40W	RS,HPF	51"
SS1230T	4-30W	RS,HPF	75"
SS1240T	4-40W	RS,HPF	99"

MODEL NUMBER	No. OF LAMPS	BALLAST TYPE	NOMINAL LENGTH
SSH1217	2-17W	SSB/T8	27"
SS1225	2-25W	SSB/T8	39"
SS1225T	4-25W	SSB/T8	75"
SS1232	2-32W	SSB/T8	51"
SS1232T	4-32W	SSB/T8	99"

T indicates tandem.

Note:

- To order with aluminum housing, use prefix "AL".
- Reflectors are available on special order. Contact factory.

Code	Description
B1	Emergency Ballast
W	277 volt

Specifications

HOUSING: Channel, cover and ends are code gauge die formed steel construction.

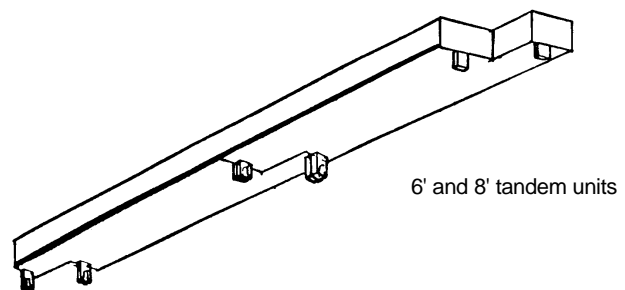
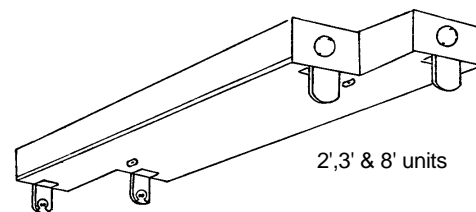
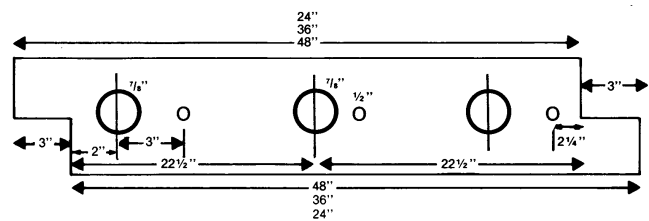
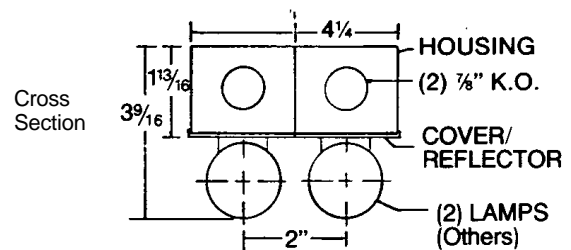
FINISH: All metal parts are cleansed by a multi-stage process and treated with an iron phosphate coating after fabrication to improve paint adhesion and rust resistance, then electrostatically sprayed with white enamel and baked at 320°F. Minimum of 88% reflectivity.

ELECTRICAL: All units wired with ballasts incorporating class P thermal protection for 120 volt, 60 cycle AC current. Ballasts mounted in direct contact with housing for maximum heat dissipation. Other voltages are available. Energy saving ballasts also available.

INSTALLATION: Units may be surface or pendant mounted, individually or in continuous rows.

PACKAGING: Individually boxed, or bulk packed as required.

LABELS: U/L listed combined with I.B.E.W.



PROPRIETARY NOTE
 Except for uses expressly granted in writing information disclosed herein is confidential and all rights, patent or otherwise, are reserved by Duray

