

Staggered Strip - One Lamp

MODEL NUMBER	No. OF LAMPS	BALLAST TYPE	NOMINAL LENGTH
SS1120	1-20W	TS, LPF	24"
SSH1120	1-20W	TS, HPF	24"
SS1130	1-30W	RS, LPF	36"
SSH1130	1-30W	RS, HPF	36"
SS1140	1-40W	RS, LPF	48"
SSH1140	1-40W	RS, HPF	48"
SS1130T	2-30W	RS, HPF	69"
SS1140T	2-40W	RS, HPF	93"

MODEL NUMBER	No. OF LAMPS	BALLAST TYPE	NOMINAL LENGTH
SSH1117	1-17W	SSB/T8	24"
SSH1125	1-25W	SSB/T8	36"
SSH1132	1-32W	SSB/T8	48"
SS1125T	2-25W	SSB/T8	69"
SS1132T	2-32W	SSB/T8	93"

T indicates tandem.

Note: Reflectors are available on special order. Contact

Code	Description
B1	Emergency Ballast
W	277 volt

Specifications

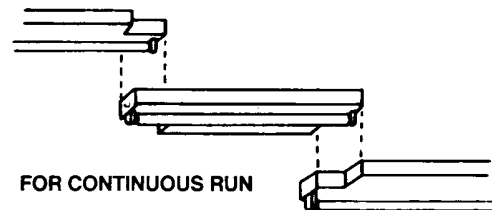
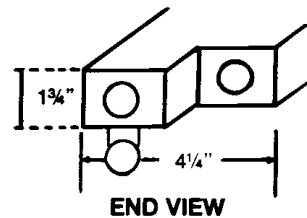
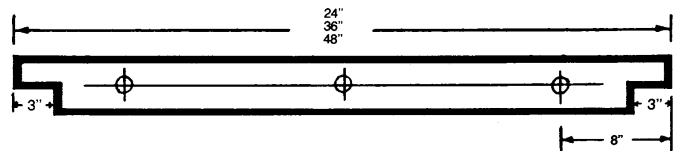
HOUSING: Channel, cover and ends are code gauge die formed steel construction.

FINISH: All metal parts are cleansed by a multi-stage process and treated with an iron phosphate coating after fabrication to improve paint adhesion and rust resistance, then electrostatically sprayed with white enamel and baked at 320°F. Minimum of 88% reflectivity.

ELECTRICAL: All units wired with ballasts incorporating Class P thermal protection, for 120 volt, 60 cycle AC current. Ballasts mounted in direct contact with housing for maximum heat dissipation. Other voltages available. Energy saving ballasts also available.

INSTALLATION: Units may be surface or pendant mounted, individually or in continuous rows.

LABELS: U/L and I.B.E.W.



PROPRIETARY NOTE

Except for uses expressly granted in writing information disclosed herein is confidential and all rights, patent or otherwise, are reserved by Duray Fluorescent Mfg. Co. Specifications subject to change without notice

10/03



Duray Fluorescent Manufacturing Company, Inc.

2050 West Balmoral Avenue Chicago, Illinois 60625 Phone 773.271.2800 Fax 773.271.4410 www.durayinc.com