

Add-O-Leer Continuous Run Side Mounted Series

MODEL NO.	Lamp Type	Ballast Type	Nom. Length
ETX1114	1-14W	TS,LPF	15"
ETHX1114	1-14W	TS,HPF	15"
ETX1115	1-15W	TS,LPF	18"
ETHX1115	1-15W	TS,HPF	18"
ETX1120	1-20W	TS,LPF	24"
ETHX1120	1-20W	TS,HPF	24"
EQX1130	1-30W	TS,LPF	36"
EQHX1130	1-30W	TS,HPF	36"
EQX1130T	2-30W	TS,HPF	72"
EQX1140	1-40W	RS,LPF	48"
EQHX1140	1-40W	RS,HPF	48"
EQX1140T	2-40W	RS,HPF	96"

MODEL NO.	Perpendicular Mount (2 light Special)	Lamp Type	Ballast Type	Nom. Length
ETX1214	ETXS1214	2-14W	TS,LPF	15"
ETHX1214	ETHXS1214	2-14W	TS,HPF	15"
ETX1215	ETXS1215	2-15W	TS,LPF	18"
ETHX1215	ETHXS1215	2-15W	TS,HPF	18"
ETX1220	ETXS1220	2-20W	TS,LPF	24"
ETHX1220	ETHXS1220	2-20W	TS,HPF	24"
EQX1230	EQXS1230	2-30W	RS,HPF	36"
EQX1240	EQXS1240	2-40W	RS,HPF	48"

ETHX1117		1-17W	T8/SSB	24"
EQHX1125		1-25W	T8/SSB	36"
EQX1125T		2-25W	T8/SSB	72"
EQHX1132		1-32W	T8/SSB	48"
EQX1132T		2-32W	T8/SSB	96"
ETHX1217	ETHXS1217	2-17W	T8/SSB	24"
EQX1225	EQXS1225	2-25W	T8/SSB	36"
EQX1232	EQXS1232	2-32W	T8/SSB	48"

Options & Accessories

Code	Description	Code	Description
B1	Emergency Battery Pack	F	Fusing
W	277 volt	SPTW6'	Cord/plug/white
EAX	Asymmetric reflector	BIA (prefix)	For Biax lamps

Specifications

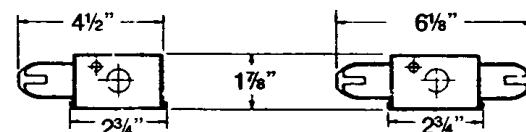
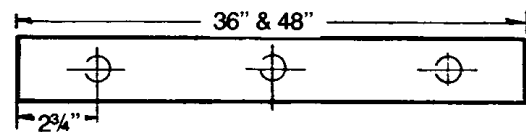
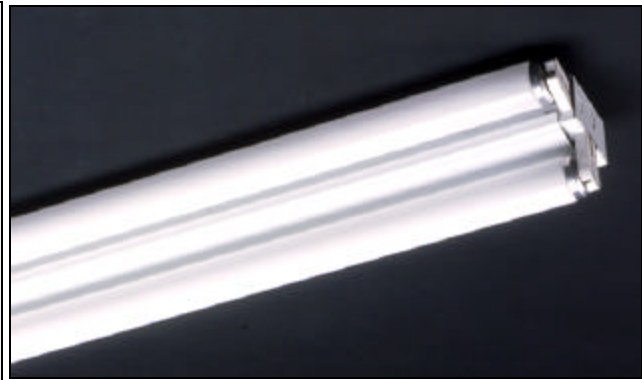
HOUSING: Channel, cover and ends are of code gauge, die formed cold rolled primed steel construction.

FINISH: All metal parts are cleansed by a multi-stage process and treated with an iron phosphate coating after fabrication to improve paint adhesion and rust resistance, then electrostatically sprayed with white enamel and baked at 320° F. Minimum of 88% reflectivity.

ELECTRICAL: All units wired with ballasts incorporation Class P thermal protection, for 120 volt, 60 cycle AC. Ballasts mounted in direct contact with housing for maximum heat dissipation.

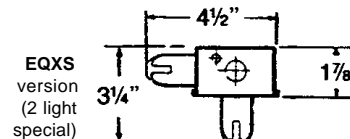
INSTALLATION: Units may be surface or pendant mounted, individually or in continuous rows.

LABELS: U/L listed and I.B.E.W.



1 LIGHT

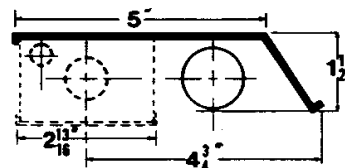
2 LIGHT



2 LIGHT SPECIAL

AKK-7/8" Diam.

EAX- Asymmetric Reflector



PROPRIETARY NOTE

Except for uses expressly granted in writing information disclosed hereon is confidential and all rights, patent or otherwise, are reserved by Duray Fluorescent Mfg. Co. Specifications subject to change without notice



Duray Fluorescent Manufacturing Company, Inc.

2050 West Balmoral Avenue Chicago, Illinois 60625 Phone 773.271.2800 Fax 773.271.4410 www.durayinc.com