

## Deluxe D Lite

**TS/SSB, TS/HPF, RS/HPF**

CATALOG NUMBER	LAMP	BALLAST TYPE	LENGTH
DDUCH115	1-15W	TS, HPF	18-1/6"
DDUCH120	1-20W	TS, HPF	24-1/6"
DDUCH130	1-30W	RS, HPF	36-1/6"
DDUCH140	1-40W	RS, HPF	48-1/6"

CATALOG NUMBER	LAMP	BALLAST TYPE	LENGTH
DDUCH117	1-17W	T8/SSB	24-1/6"
DDUCH125	1-25W	T8/SSB	36-1/6"
DDUCH132	1-32W	T8/SSB	48-1/6"

### Options & Accessories

CODE	DESCRIPTION
K	Grounded convenience outlet
M	Turn knob switch
N	Rocker switch installed (white)
SPTW6'	6' cord/plug/white
W	277 volt

Accessories rated for use with 120 volt ballast only. Additional options and accessories available. Call factory for details.

### SPECIFICATIONS

**HOUSING:** Entire construction rigidly die formed of code gauge steel.

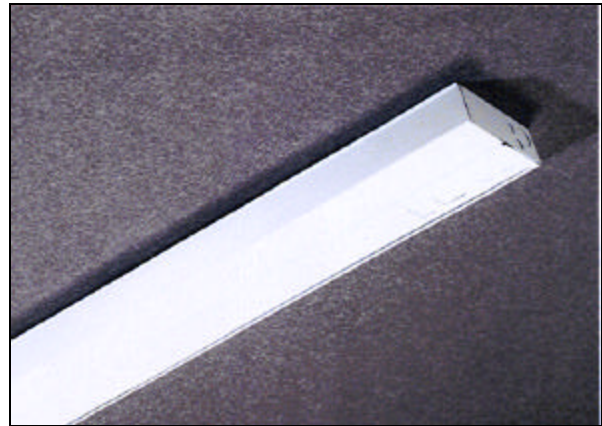
**SHIELDING:** White ribbed Acrylic diffuser easily installed and removable by finger pressure.

**FINISH:** High gloss white enamel.

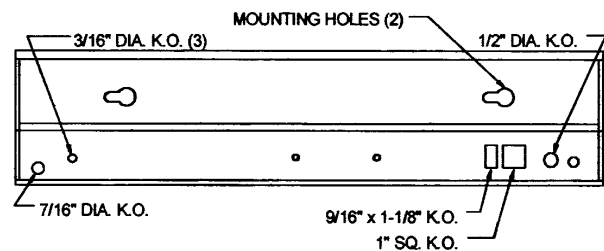
**ELECTRICAL:** All units wired with "A" sound rated ballasts and except for simple reactive type, incorporating Class P thermal protection, for 120 volt, 60 cycle AC. Other voltages are available. Ballasts mounted in direct contact with housing for maximum heat dissipation. Sockets completely wired.

**INSTALLATION:** Units may be surface mounted, individually or in continuous rows.

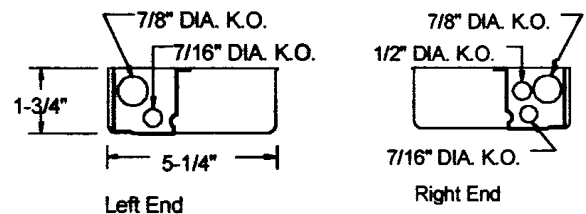
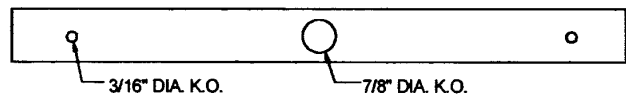
**LABELS:** U/L and IBEW



Bottom without diffuser



Back



Specifications subject to change without notice.

10/03



**Duray Fluorescent Manufacturing Company, Inc.**

2050 West Balmoral Avenue Chicago, Illinois 60625 Phone 773.271.2800 Fax 773.271.4410 www.durayinc.com