

1800 Series

MODEL # WHITE ENAMEL REFLECTOR Solid	MODEL # WHITE ENAMEL REFLECTOR Uplight	NUMBER OF LAMPS	BALLAST TYPE	NOMINAL LENGTH IN FEET
A1842	U1842	2-38W	Slimline	4
A1882	U1882	2-75W	Slimline	8
A1882CW	U1882CW	2-75W	Slimline	8
A1883	U1883	3-75W	Slimline	8
A1884	U1884	4-75W	Slimline	8
A1842-8	U1842-8	2-60W	H.O.800MA	4
A1882-8	U1882-8	2-105W	H.O.800MA	8
A1883-8	U1883-8	3-105W	H.O.800MA	8
A1842-15	U1842-15	2-110W	PG, VHO or	4
A1882-15	U1882-15	2-215W	SHO 800 MA	8

Note: 1. T indicates tandem. CW indicates for temperature of 0° F.
2. Other lamp and ballast configurations available. Consult factory for details.

SPECIFICATIONS

HOUSING: Channel die formed of code gauge steel, reinforced by ribbing the entire length for extra rigidity. Dual purpose end plates act as a coupler for continuous row mounting. Socket plates snap into place without screws.

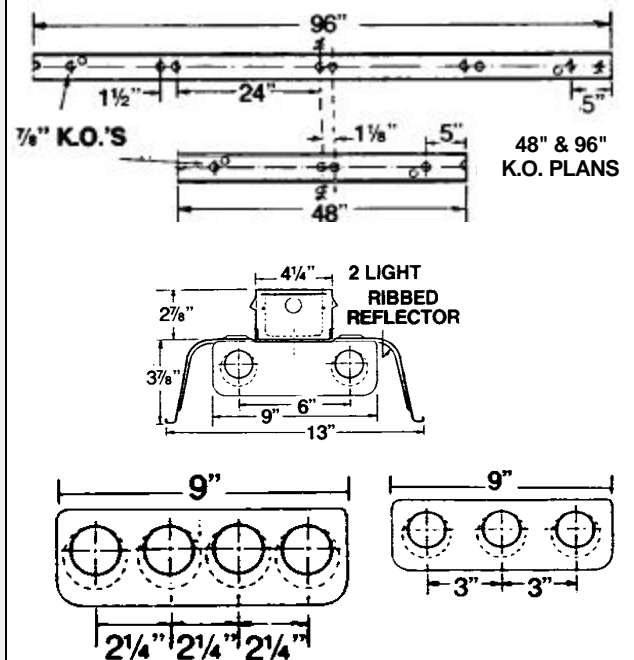
REFLECTOR: 48" long, die formed, cross-ribbed and double embossed for added rigidity. 15% uplite slotting is optional. Fastens without bolts to channel by two captive turn latches.

FINISH: All metal parts are cleansed by a multi-stage process and treated with an iron phosphate coating to improve paint adhesion and rust resistance, then electrostatically sprayed with white enamel and baked at 375°F. Minimum of 88% reflectivity.

ELECTRICAL: All units wired with ballasts incorporating Class P thermal protection, for 120 volt, 60 cycle AC current. Other voltages available. Ballasts mounted in direct contact with housing for maximum heat dissipation. Turret sockets completely wired.

INSTALLATION: Units may be surface or pendant mounted, individually or in continuous rows.

LABELS: U/L combined with I.B.E.W. label.



Specifications subject to change without notice.

OPTIONS & ACCESSORIES

Code	Description
B2	Battery Pack
F	Fusing
PDFA	Prismatic Diffuser Frame
PVR	Parabolic Longitudinal Vee Reflector – Provides 30° Lateral Shielding – 4' long
RE	Reflector ends – to be used only with individual units or at end of rows
SGH	Slide Grip Hanger – complete with stove bolt and fastener
TBH	T-bar hanger for slimline/rapid start
W	277 volt
WG13	13" wire guard

