

1300 Series

MODEL # WHITE ENAMEL REFLECTOR Solid	MODEL # WHITE ENAMEL REFLECTOR Uplight	NUMBER OF LAMPS	BALLAST TYPE	NOMINAL LENGTH IN FEET
T 1321	---	1-20 W	TS, LPF	2
TH 1321	---	1-20 W	RS, HPF	2
T 1322	---	2-20 W	TS, LPF	2
TH 1322	---	2-20 W	RS, HPF	2
Q 1301	U1301	1-40 W	RS, LPF	4
Q1301 T	U1301T	2-40 W	RS, HPF	8
Q 1302	U1302	2-40 W	RS, HPF	4
Q 1302 CW	---	2-40 W	RS, HPF,CW	4
Q 1302 T	U1302T	4-40 W	RS, HPF	8

*T indicates tandem. CW indicates for temperature of 0° F.

T8 Electronic

MODEL # WHITE ENAMEL REFLECTOR Solid	MODEL # WHITE ENAMEL REFLECTOR Uplight	NUMBER OF LAMPS	BALLAST TYPE	NOMINAL LENGTH IN FEET
Q13132	U13132	1-32W	SSB/T8	4
Q13132T	U13132T	2-32W	SSB/T8	8
Q13232	U13232	2-32W	SSB/T8	4
Q13232T	U13232T	4-32W	SSB/T8	8

*T indicates tandem.

Prefix catalog number with **SR** when ordering fixture with **aluminum reflector**.
Consult factory for reflector specifications.

OPTIONS	
Code	Description
B1	Battery Pack
HLO (prefix)	High lumen output ballast (for 4' T8 only)
W	277 volt
WG11	11" wire guard

SPECIFICATIONS

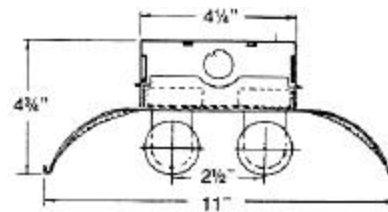
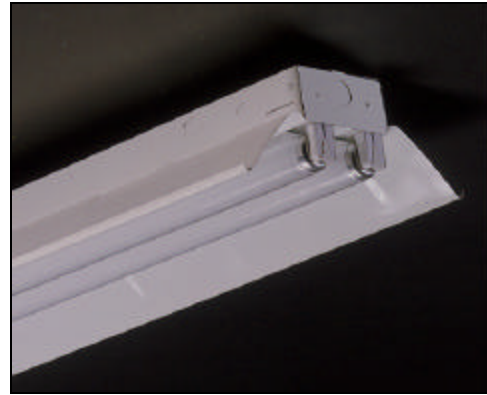
Housing: Channel die formed of code gauge steel. Dual-purpose end plates act as coupler for continuous row mounting. All chassis components snap into place without screws.

Reflector: white enamel reflector 48" long, die formed and cross-ribbed for added rigidity. 10% uplite is optional. Only one fastener secures reflector; other side slides into position.

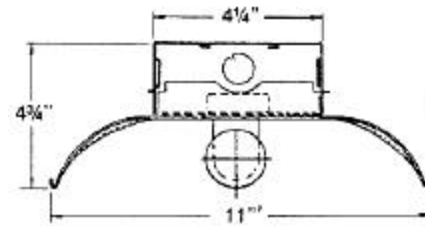
Electrical: All units wired with ballasts incorporating Class P thermal protection for 120 volt, 60 cycle AC current. Other voltages available. Ballasts mounted in direct contact with housing for maximum heat dissipation. Sockets completely wired.

Installation: Units may be surface or pendant mounted, individually or in continuous rows.

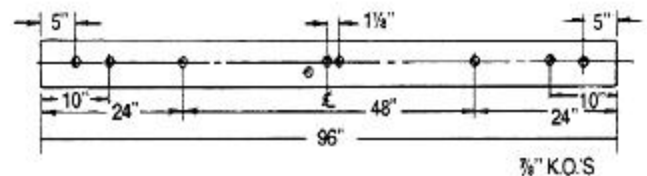
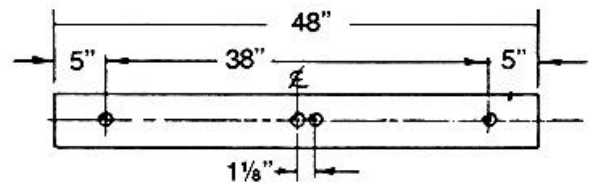
Labels: U/L combined with I.B.E.W.



2 LITE



1 LITE



Specifications subject to change without notice.

